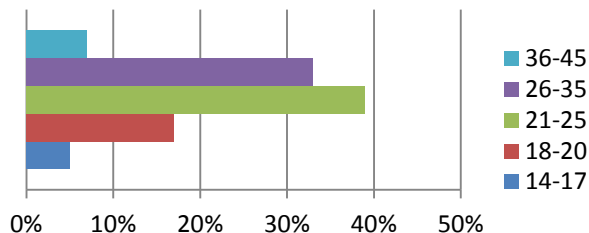




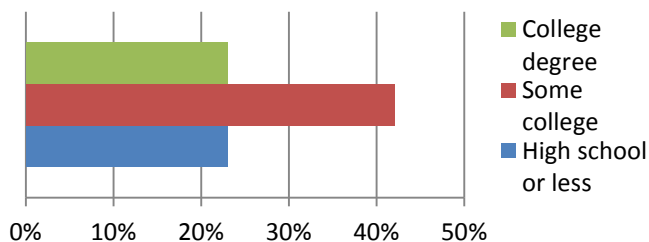
WHO ENROLLED IN THE STUDY?

A diverse group of women enrolled in CHOICE and are very similar to women who live in the St. Louis region. Each chart shows the percent of women in each category of the 9,256 enrolled.

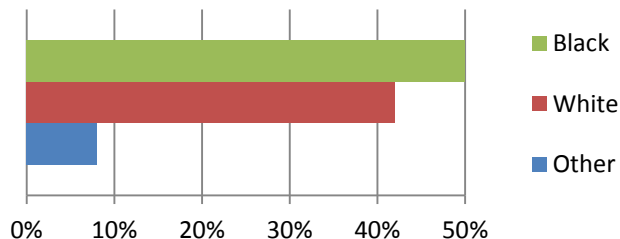
AGE (Years)



EDUCATION

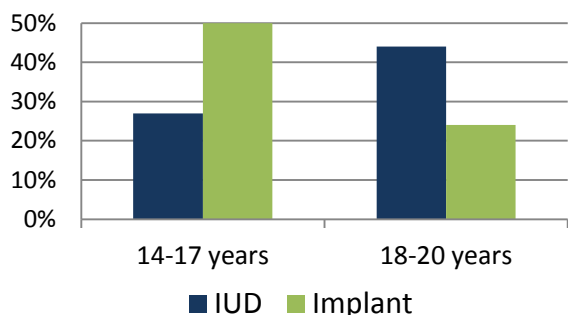
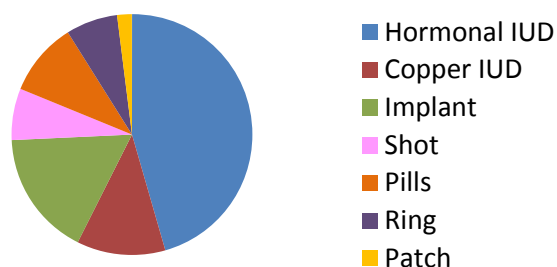


RACE



WHAT METHOD DID WOMEN CHOOSE?

This chart shows the birth control methods 9,256 women chose when they enrolled in CHOICE. Overall 75% of women chose a long-acting reversible contraceptive method (**LARC: IUD or implant**). Teens also chose LARC methods.



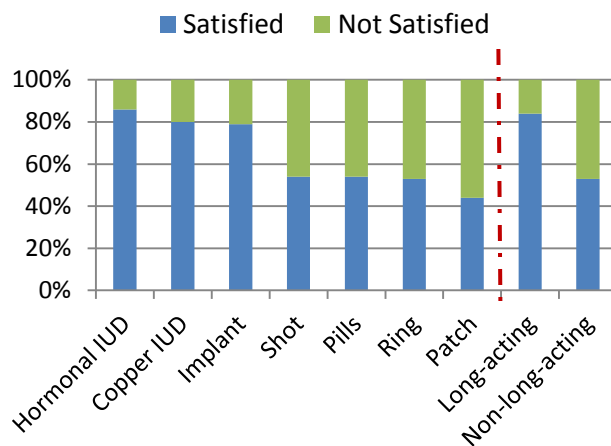
ARE WOMEN STILL USING THEIR METHOD?

Among women who chose a LARC method, 86% were still using their method at 1 year. Only 55% of women who chose non-long-acting methods were still using their method at 1 year.

HORMONAL IUD	88%
COPPER IUD	84%
IMPLANT	83%
SHOT	57%
PILLS	55%
RING	54%
PATCH	49%
LONG-ACTING METHODS	86%
NON-LONG-ACTING METHODS	55%

ARE WOMEN SATISFIED WITH THEIR METHOD?

Women using LARC had the highest satisfaction at 1-year follow-up. Women who stopped their method were considered not satisfied.



HAVE WOMEN HAD UNINTENDED PREGNANCIES?

Women using LARC or the shot had the lowest unintended pregnancy rates at 1, 2 & 3 years of follow-up. Pill, ring & patch users had a pregnancy rate that was 20 times higher than LARC users. LARC was very effective at preventing pregnancy regardless of age, but women <21 using the pill, ring or patch were 2 times more likely to get pregnant than women ≥21 years using the same methods.

